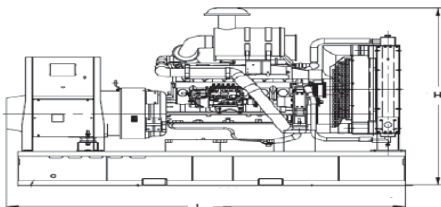


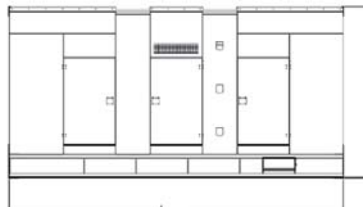
POWER RATING

	With 60 Hz of frequency
Output voltage (Vac), 3Phase	380 ~ 480 Volts(208-240volt option)
Prime power	796 kW, 995 kVA
Standby power	880 kW, 1100 kVA

Power ratings are made in accordance with ISO8528

Weight and Dimensions

Skid Type

Overall size (L*W*H), mm :
4866*2060*2473
Weight : 8040 kg


Sound Proof Type

Overall size (L*W*H), mm :
5808*2260*3116
Weight : 10500 kg

Generator Set Performance and Feature

- **RELIABLE HIGH QUALITY SYSTEM-** To improve the performance of Products, high quality auxiliaries equipment applied and optimized protection device built in the digital controller against malfunctioning and abnormal conditions.
- **FREQUENCY REGULATION ACCURACY-** Under varying loads from no load to 100% load at the rated power factor(0.8), frequency regulation is 5%(mechanical type governor), 1%(electric type governor).
- **APPLIED THE 2/3 PITCH WINDING TO** reduce the 3rd harmonics.
- **SIMPLE AND EASY OPERATION-** With centralized controls simplifying generator operation and supervision is made very simple.
- **VOLTAGE REGULATION ACCURACY-** Under varying loads from no load to 100% load at the rated power factor (0.8), voltage regulation is less than $\pm 2.5\%$.
- **DESIGNED BY USING THE LATEST TECHNOLOGIES AND THE BEST MATERIALS AVAILABLE TO GUARANTEE HIGH EFFICIENCY VALUE.**
- **LOW COST MAINTENANCE & OPERATION-** Use the specialized diesel engine for generator set keeps operation costs very low.
- **VOLTAGE ADJUSTABLE RANGE-** Under rated speed and no load condition, voltage adjustable range is less than $\pm 5\%$ of rated voltage.
- **IMPREGNATED WITH HIGH-GRADE RESIN AND PROTECTION AGAINST HOSTILE ENVIRONMENT IS PROVIDED AS STANDARD.**
- **SUPPLIED WITH OVER EXCITING CURRENT AND UNDER FREQUENCY PROTECTION BUILT IN THE AVR.**
- **SUITABLE FOR PARALLEL OPERATION WITH OTHER GENERATOR OR MAINS POWER. (Parallel kit is available on request.)**

ENGINE

Manufacturer Perkins
Model..... 4008-TAG2
Prime power (Net)
At 60 Hz 838kWm(1139.7ps)/1800rpm
Standby power (Net)
At 60 Hz 924kWm(1256.6ps)/1800rpm
Nos. of cylinder 8 cylinders
Block & cycle In-line 4 cycle
Displacement..... 30.561 liters
Compression ratio..... 13.6:1
Fire order..... 1,4,7,6,8,5,2,3
Cylinder type Replaceable dry liner
Bore x stroke 160 x 190 mm
Aspiration Turbocharged & IC
Rotation Anti-clockwise (view from flywheel)

NOTE-The Engine performance corresponds to ISO3046, BS5514 and DIN 6271.

LUBRICATION SYSTEM

Oil filter..... Cartridge type
Lube method Full forced pressure feed
Oil consumption 0.5 grams per ps and hour
Oil pump type Gear driven by crankshaft
Max oil temp. 125 Celsius degree
Shutdown setting..... 0.5 to 0.7 kg/cm²
Oil Type..... SAE15W40CE

FUEL SYSTEM

Fuel filter Cartridge type
Injection..... Direct type
Governor Electronic
Fuel type Light diesel fuel, DIN51601, BS2869, ASTM D975
Fuel tank mounted in bed
Fuel consumption at prime operation (liter/hr)
At 60 Hz max 224 (lph)
NOTE- based on max at 100% loaded

ELECTRICAL SYSTEM

Battery Nos. 2 x 200 AH
Alternator..... 24 Vdc, 40 A
Starting motor 24 Vdc, 8.2 kW

GENERATOR

Type Revolution Field
Phase & wire 3P4W
Power factor..... 0.8

GENERATOR

Nos. of Pole 4
Speed 1800/60 (rpm/Hz)
Insulation Class..... H
Excitation..... Self-Excited, Brushless
Method of cooling Self ventilation
Winding Pitch 2/3
One-step load 100% (NFPA110)
Coupling..... Flexible Disc
Bearing Single, Ball Bearing
Connection Star (Wye)
Insulation grade IP21
Over speed 2070 rpm
Overload 110% for 1 hr of rated power

NOTE- Generator is in compliance with IEC 60034-1, CEI 2-3, BS4999-5000, VDE 0530, NF 51-100, 111, OVE M-10, NEMA MG 1.22

EXHAUST SYSTEM

Exhaust gas flow 202 m³/min at 60Hz
Exhaust gas temp..... 505 degree Celsius at 60Hz
Silencer/muffler Nos.2 x Dry type
Exhaust outlet..... Nos.2 x 6 inches (152.4mm),
Based on 10meter

COOLING SYSTEM (Standard Radiator)

Type Water cooled
Pump capacity l/min 720@60Hz
Thermostat operating temp (Celsius degree)
Opening 71
Full open 85
Shutdown set 96

AIR SYSTEM

Air cleaner type Dry, paper element

SERVICE REFILL CAPACITY

Engine oil 153 liters
Coolant 149 liters

CONTROL PANEL mounted



Dimension (W x H x D): 450 x 600 x 200 (mm)

SPECIFICATION

SWITCH& PUSH BUTTON

Manual/Remote/Auto button	<input type="checkbox"/>
Stop button	<input type="checkbox"/>
GCB Close/Trip button	<input type="checkbox"/>
Alarm button	<input type="checkbox"/>
Direction/Enter/ESC button	<input type="checkbox"/>
Emergency stop push button	<input type="checkbox"/>
Main Power Switch	<input type="checkbox"/>
Voltage Adjuster	<input type="checkbox"/>

DISPLAY

Digital Volt./Current/Power/PF/Hz	<input type="checkbox"/>
Running Hours/Kilowatt hour	<input type="checkbox"/>
RPM/DC Voltage	<input type="checkbox"/>
Oil press./Coolant temp	<input type="checkbox"/>
Cooldown time/Mains power live/Failure sensing time	<input type="checkbox"/>

BREAKER

Main molded case circuit breaker (MCCB 4P)	<input type="checkbox"/> (3P as option)
Circuit protector for DC source	<input type="checkbox"/>
Breaker for main power/coolant heater	<input type="checkbox"/>

INDICATOR & PROTECTION SYSTEM

Main power lamp	<input type="checkbox"/>
Manual/Remote/Auto, LED	<input type="checkbox"/>
Running, LED	<input type="checkbox"/>
GCB close/trip, LED	<input type="checkbox"/>
Emergency stop, LCD	<input type="checkbox"/>
Over voltage/Under voltage/Over Current, LCD	<input type="checkbox"/>
High coolant temperature, LCD	<input type="checkbox"/>
Low lub. oil pressure, LCD	<input type="checkbox"/>
Fail to start, LCD	<input type="checkbox"/>
Over speed, LCD	<input type="checkbox"/>

REMOTE SYSTEM

PC Monitoring program	<input type="checkbox"/>
Dry Contact (Mains Power, Running, Fault)	<input type="checkbox"/>

CONTROL SYSTEM

SPEED CONTROL UNIT	<input type="checkbox"/>
--------------------	--------------------------

OTHERS

Dry Contact (Extension Module)	<input type="checkbox"/>
Battery Charger	<input type="checkbox"/>

O: Equipped as standard

▲: To be equipped as option

X: not applicable

STANDARD EQUIPMENT

Engine

Fuel oil filter
Lub. oil filter and drain valve
Air cleaner
Lubricate oil
Fan Belt

Control panel

Digital control panel (EDGC10)

Exhaust

Industrial Silencer (Sound attenuation up to 20db)
Bellows

Voltage Connection

440V/254V

Electrical System

Battery and Battery cable
Charging Alternator

Manual

Operation & Maintenance manual
Generator part book

OPTIONAL EQUIPMENT

Engine

Battery auto charger (For Standby Power usage)

Control panel

Self-standing panel

Enclosed Unit

Sound Proof Canopy

Cold climate heater

Coolant heater, 120V/240V

Spare parts

PM (preventive maintenance) parts; filters & oils
RSP (recommended spare parts)

Fuel Options

Fuel Water Separator
Free Standing Fuel Tank